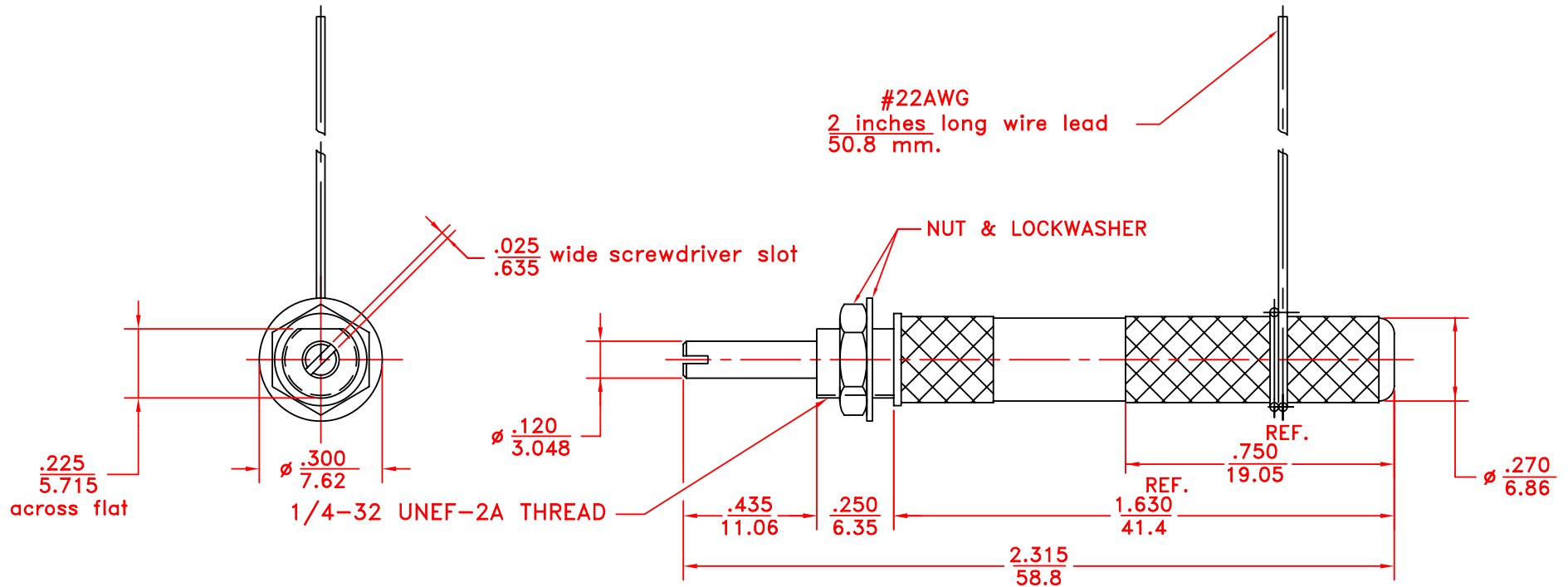


REV	DESCRIPTION	DATE	APP
00	NEW DRAWING	11/10/09	
01	ADDED NOTES 10; 11; 12	03/26/12	D.D.



NOTES:

1. Capacitance: Cmax over 20pF
2. Capacitance: Cmin less than 1.5 pF
3. Working voltage: 6 KVDC
4. Withstanding voltage: 12 KVDC
5. Quality factor "Q" @ 25 MHz > 1500
6. Torque .5 to 1.0 oz-in
7. Construction: non-magnetic
8. Operating temperature : below 4°K to +125° C.
9. Dimensions: in/mm
10. TC Temperature coefficient 0 ± 300 (ppm/°C)
11. Current rating: 10 amps.
12. Rotational life: 10,000 turns.

TOLERANCES: (EXCEPT AS NOTED)		SPRAGUE GOODMAN ELECTRONICS INC. 1700 SHAMES DRIVE WESTBURY, NY 11590	
DECIMAL: ± 0.002 in ± 0.051 mm	MATERIAL:	SCALE: 2:1	DRAWN BY: R. LEVIN
FRACTIONAL: 1/64	TITLE: OUTLINE DWG SGNMNC1206EK		APPROVED: S. GRINBERG
ANGULAR: 1°	DATE: 11/10/09	DRAWING NUMBER SGNMNC1206EK	USED FOR: REV. 01